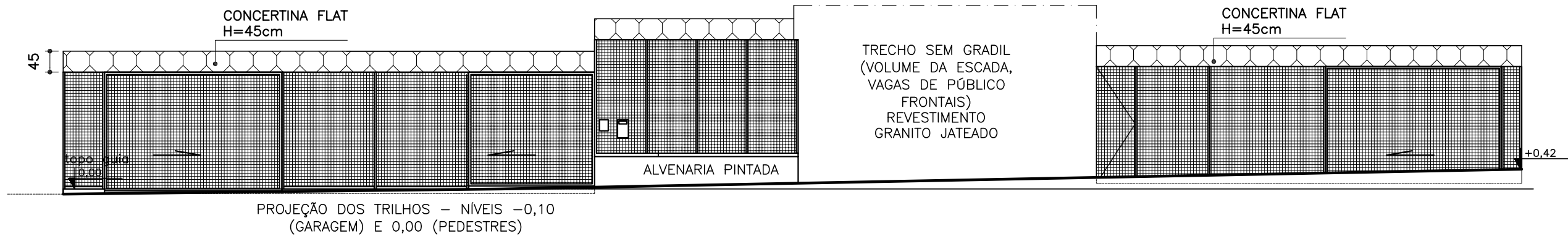
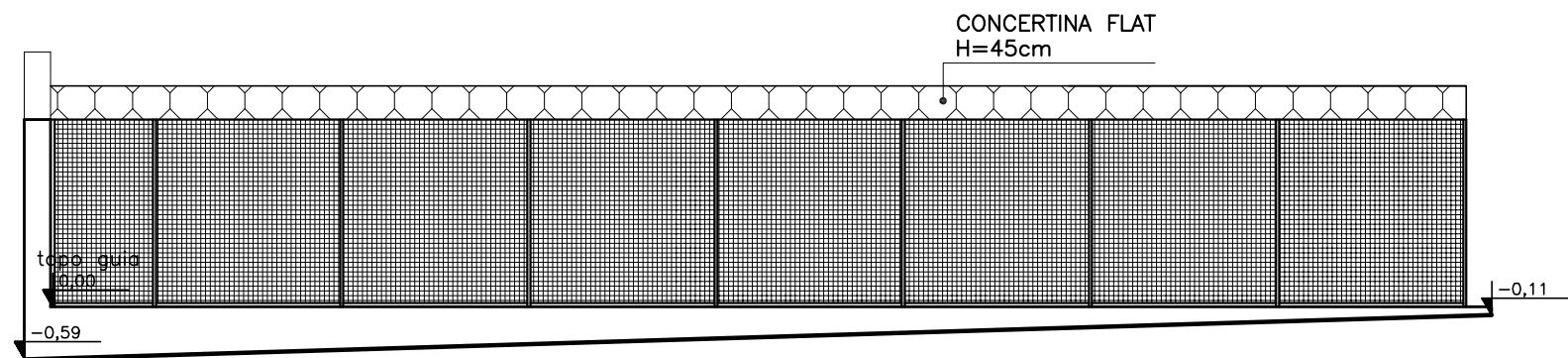


PLANTA MUROS E GRADIL
ESCALA 1:100

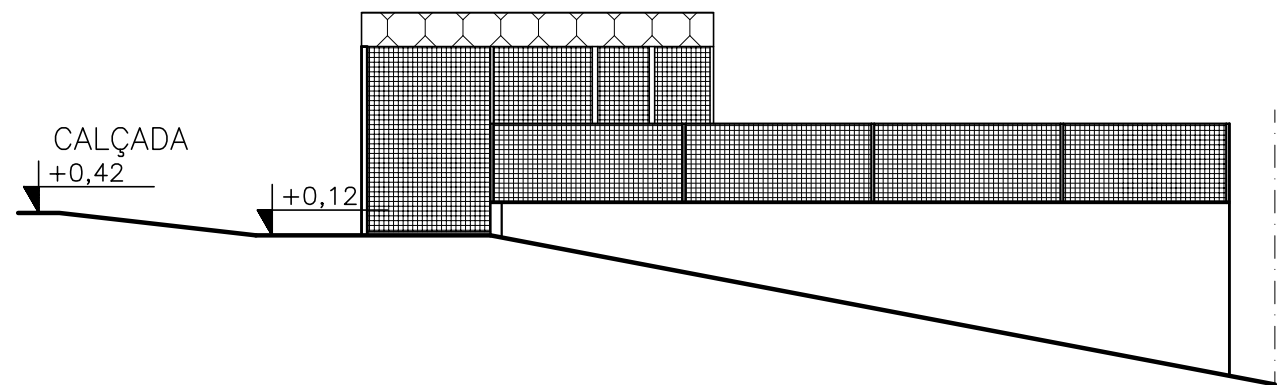
PROMOTORIAS DE JUSTIÇA DE IPATINGA- MG		
DETALHAMENTO: CONCERTINA		
CONTEÚDO:	PLANTA MUROS E GRADIL	REVISÃO 00 22/03/24
DESENHO:	Marcella Vieira Lordello	FOLHA: 01/02

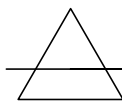


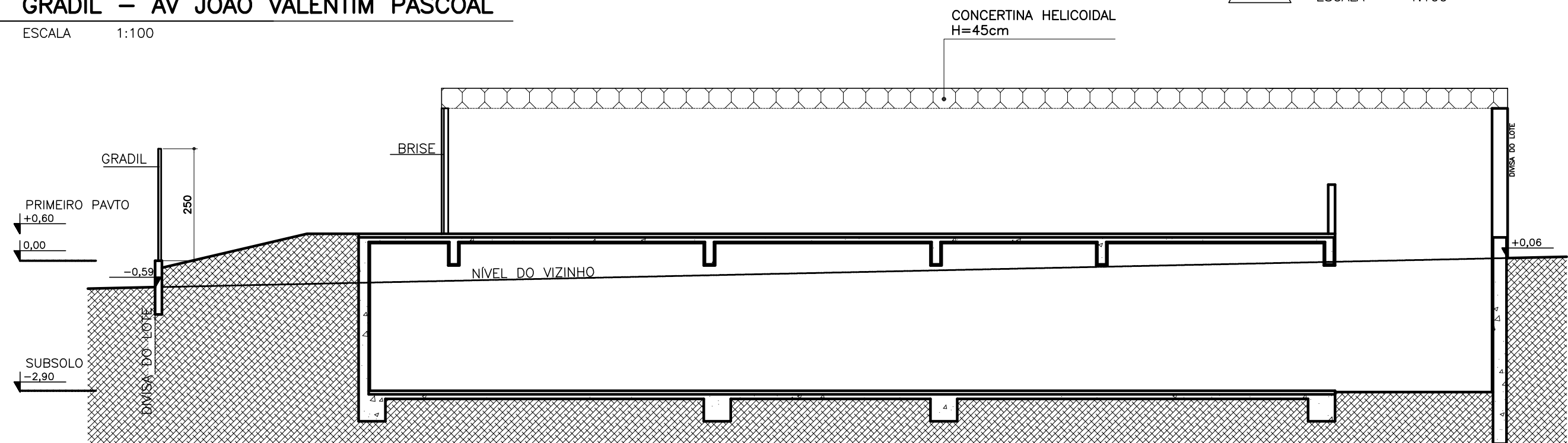
 **GRADIL – AV DESPACHANTE RUI DJALMA BARBOSA**
ESCALA 1:100



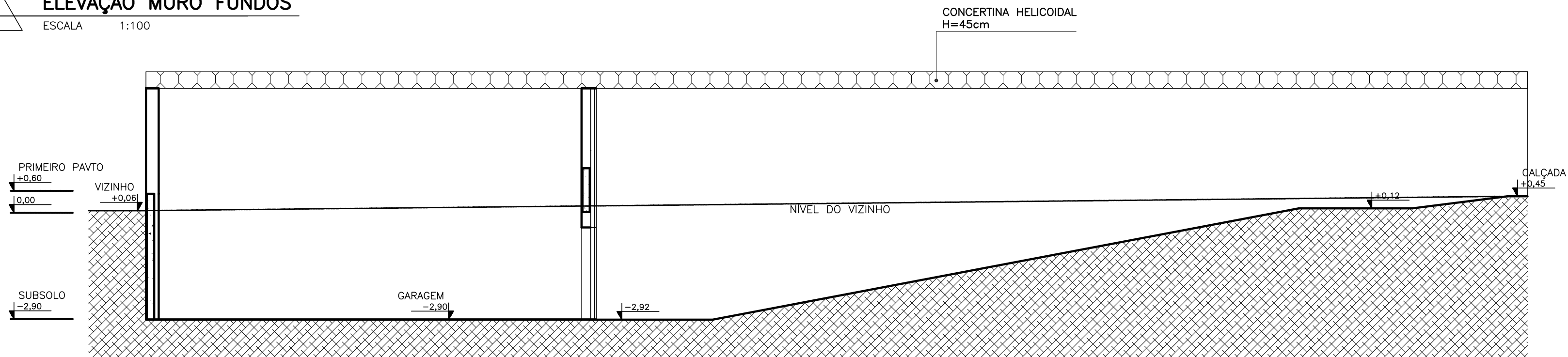
 **GRADIL – AV JOÃO VALENTIM PASCOAL**
ESCALA 1:100



 **GRADIL – ELEVÇÃO 01**
ESCALA 1:100



 **ELEVÇÃO MURO FUNDOS**
ESCALA 1:100



 **ELEVÇÃO MURO LATERAL DIREITA**
ESCALA 1:100

PROMOTORIAS DE JUSTIÇA DE IPATINGA– MG		
DETALHAMENTO: CONCERTINA		
CONTEÚDO:	GRADIS E ELEVÇÕES DOS MUROS	REVISÃO 00 22/03/24
DESENHO:	Marcella Vieira Lordello	FOLHA: 02/02